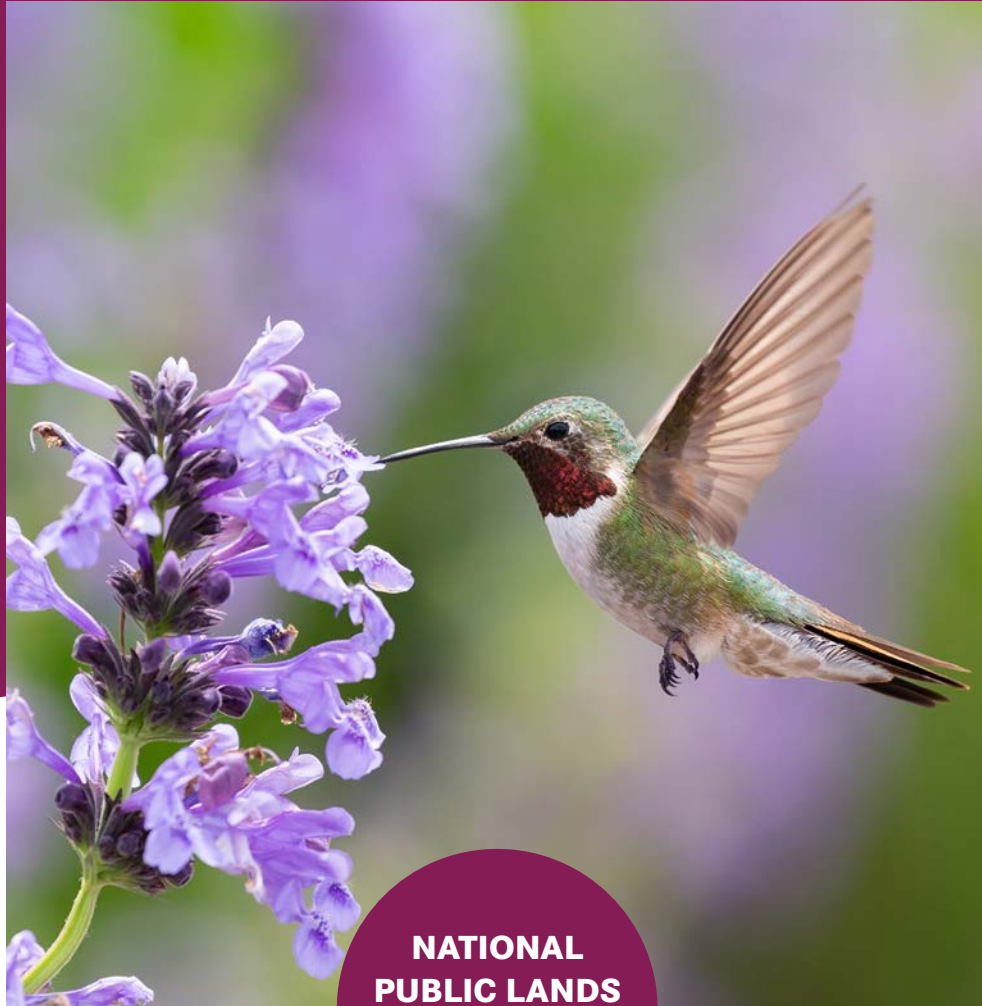


Create a Pollinator Container Garden



**NATIONAL
PUBLIC LANDS
DAY HANDS ON
ACTIVITY**



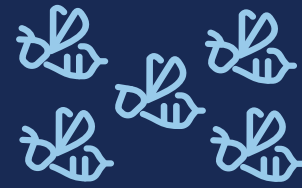
National Coordinator



National Sponsor

TOYOTA

The Important Role of Pollinators



If you've taken a bite of apple, enjoyed a piece of chocolate, sat in the shade of a tree, or stopped to smell the flowers, you've benefited from pollination!

Between 75–95% of all flowering plants depend on pollinators—hummingbirds, bats, beetles, bees, ants, wasps, moths, butterflies, and other small animals that help plants reproduce by transporting pollen within a flower or between flowers, resulting in healthy fruits and fertile seeds.

Despite this important work, many pollinator populations are in decline due to loss of habitat for feeding and nesting. Pesticides, disease, and climate change can also harm pollinator populations or force them to move to different areas.

The good news is that YOU can help by creating pollinator-friendly habitat. Use this activity guide to create a pollinator-friendly garden.



Toyota's Pollinator Habitat Commitment

Toyota has pledged to enhance 26,000 acres of pollinator habitat across North America over the next five years. Through [partnerships with NEEF and the Pollinator Partnership](#), Toyota is supporting the creation and enhancement of pollinator habitat through investment in local communities and projects.

In addition to these investments, 17 Toyota sites across North America have planted pollinator gardens for monarch butterflies and other pollinator species.

Toyota has also worked with the Suppliers Partnership for the Environment to launch the Pollinator Project Challenge. Participating automakers and suppliers across North America planted more than 200 pollinator gardens from 2020–2021.



Create Pollinator Habitat with a Container Garden

Container gardening is exactly what it sounds like: Gardening in pots and other containers, rather than directly in the ground. Anyone can create a container garden and it's a great option if you have limited outdoor space like a balcony, small patio, or windowsill. A variety of pollinator-friendly plants will thrive in containers, providing food and habitat for your local pollinator species.

Here's what you need to create a container garden:

- Gardening pots or other containers:
 - Get creative and look for containers around the house that you can reuse such as buckets, jars, and baskets
 - If you want to plant perennials (plants that will come back year after year), choose containers that are 16-inches deep or more
- Soil: Your local gardening center or home improvement store can help you choose the appropriate soil
- Plants:
 - Many perennial plants do well in containers, and they will come back year after year. **Be sure to choose plants that are native to your area:** The Pollinator Partnership offers [regional planting guides](#) and Lady Bird Johnson Wildflower Center provides [recommended plant lists by state](#).
 - Herbs that flower also support pollinators, including dill, lavender, thyme, mint, and cilantro.

Sources

Activities and information for this activity were sourced from the following resources:

[Celebrate Urban Birds](#)

[Tufts Pollinator Initiative](#)

[Pollinator Partnership](#)

[Lady Bird Johnson Wildflower Center](#)



Tips and Tricks

- Water frequently — Containers dry out more quickly than the ground
- No fertilizer needed — Native plants are well suited to your local climate
- Winterize — Protect perennial plants by covering containers with a tarp or with a few inches of mulch over the winter

Want to go bigger?

[Learn to build a pollinator garden in 7 steps.](#)









Toyota 2050 Challenges

In October 2015, Toyota announced the Toyota Environmental Challenge 2050. Since then Toyota has been striving to reduce the environmental burden attributed to automobiles to as close to zero as possible, while developing measures to contribute positively to the earth and its societies with the aim of achieving a sustainable society. This activity directly aligns with one of Toyota's 2050 Challenges:

Challenge 6 Establishing a Future Society in Harmony with Nature

It is critical for humans to conserve forests and other natural environments in all regions for coexistence in harmony with nature. However, deforestation is progressing across the world, resulting in the fragmentation of diverse living creature habitats, as well as the continuing loss of biodiversity. This entails a number of issues including the loss of biological resources that are essential for society, causing natural disasters, and spurring global warming, and we believe that it poses a risk to the potential for the sustainability of the entire society.



CHALLENGE 1	CHALLENGE 2	CHALLENGE 3	CHALLENGE 4	CHALLENGE 5	CHALLENGE 6
New vehicle Zero CO ₂ Emissions Challenge	Life Cycle Zero CO ₂ Emissions Challenge	Plant Zero CO ₂ Emissions Challenge	Challenge of Minimizing and Optimizing Water Usage	Challenge of Establishing a Recycling-based Society and Systems	Challenge of Establishing a Future Society in Harmony with Nature
					

National Environmental Education Foundation

4301 Connecticut Avenue NW Suite 160
Washington, DC 20008-2326

202-833-2933

NEEFusa.org

