



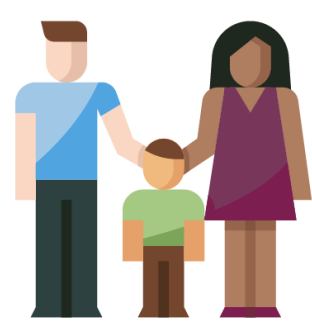
IMPACT REPORT

National Public Lands Day 2025

On September 27, we celebrated the 32nd annual National Public Lands Day, honoring our public lands as more than destinations, but as our collective backyard, shared front porch, and natural playground. This year's theme, *Our Home Outdoors*, highlighted how these spaces ground us, connect us, and give us a sense of place. Together, we recognized the role these lands play in our lives and the importance of caring for them for future generations.



COMMUNITY AND VOLUNTEER ENGAGEMENT



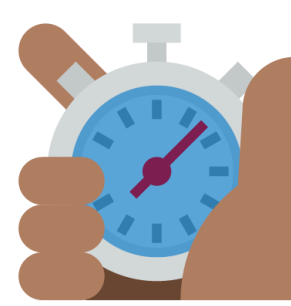
55,550

Participants



916

Events



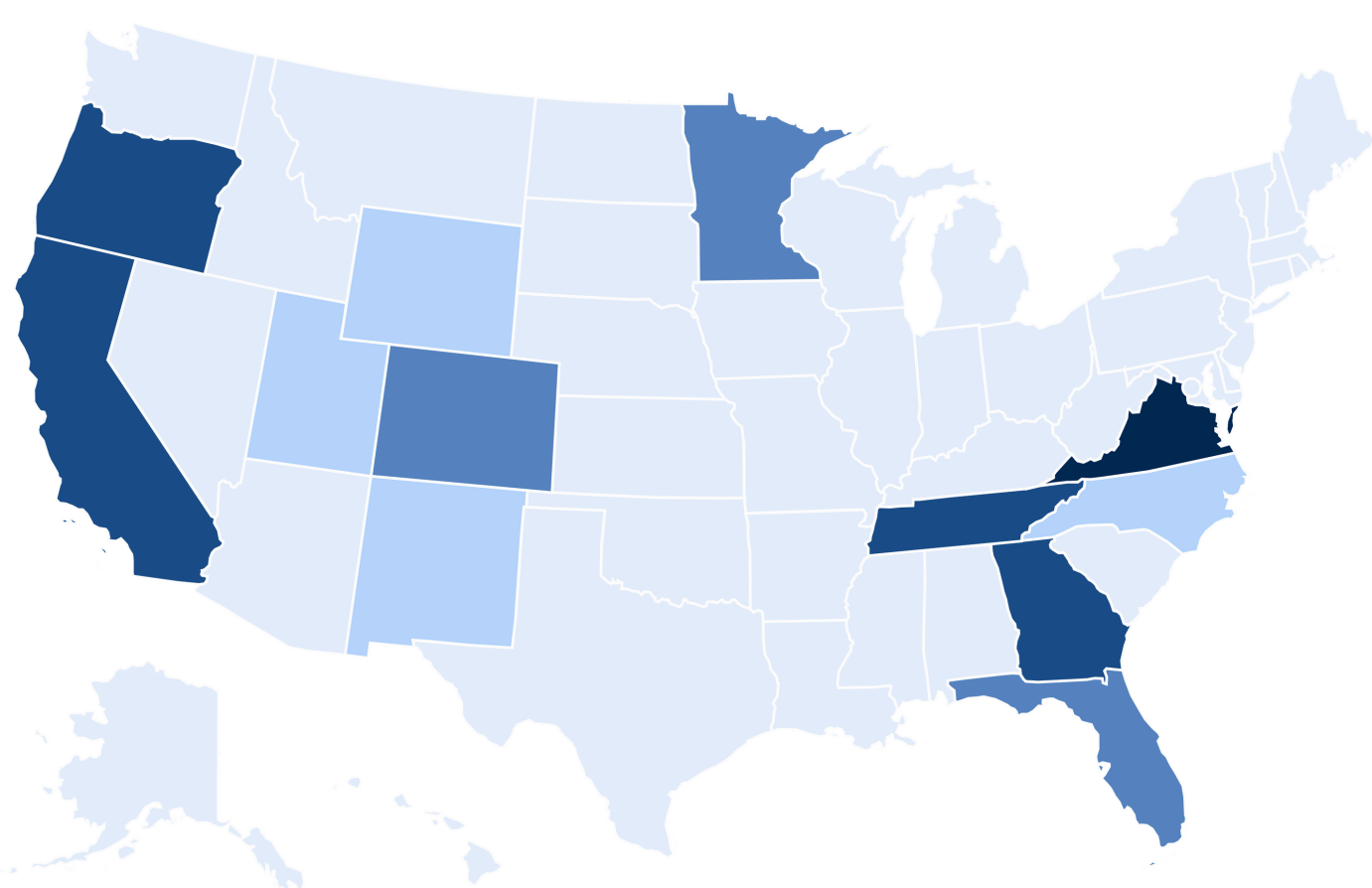
328,105

Participant Hours



\$9.4 Million

Value of Volunteer Service



Events were held this year in all 50 states and the District of Columbia, as well as Puerto Rico, American Samoa, and the US Virgin Islands.



Photo by Ozark Trail Association

CONSERVATION AND ACCESSIBILITY IMPACT



26,672

Acres of land impacted



131,972

Pounds of trash collected



4,938

Native plants added



1,419,044

Square feet of invasive species removed



1,310

Miles of trails and shoreline impacted



461

Accessibility enhancements & infrastructure improvements

To explore the full breakdown of the day's events and volunteer impact, visit: NEEFusa.org/npld-2025-impact.



Data is sourced from surveys returned by NPLD site managers

States Join the Fun

From Florida to Hawaii, more than 330 events were held in state parks and preserves this year. Over half the states hosted NPLD events, with Georgia, Tennessee, and Virginia celebrating an NPLD event in nearly all of their parks.



Photo by Paul and Candy Sinar, Friends of Bellevue State Park

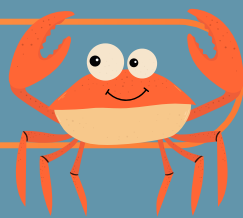
In Tennessee, First Lady Maria Lee and the Tennessee Serves team joined volunteers at Pickett CCC Memorial State Park to install color-blind viewfinders to improve accessibility. Volunteers at Iowa's Bellevue State Park helped to winterize the park's butterfly garden.



Photo by Sustainable Sandhills

At Sailor's Creek Battlefield State Park in Virginia, participants could join a ranger to learn about the area's paranormal activities. The nonprofit Sustainable Sandhills led a natural history hike through the longleaf pine forest at North Carolina's Carver's Creek State Park. And, SOLVE and the Surfrider Foundation hosted shoreline cleanups at state parks in Oregon.

NPLD BioBlitz



The NPLD Bioblitz project on [iNaturalist](#) has over 1,500 observations of 680 species logged, from an Atlantic Ghost Crab to Pacific Chorus Frog. This project allows for people from across the country to record the plants and wildlife they see on public lands.

Sponsors & NPLD 2026

Thank you to our sponsors the Bureau of Land Management, National Park Service, Ecolab, and Athletic Brewing. Interested in supporting NPLD? Contact info@NEEFusa.org

"OUR HOME OUTDOORS"

Signature Event

Bartram's Garden Philadelphia, PA

Each year, NEEF partners with a public lands site to host the NPLD Signature Event, offering participants the chance to engage in meaningful conservation work, celebrate public lands, and enjoy educational activities at an iconic American outdoor space. This year, Bartram's Garden, a free public park in Philadelphia and North America's oldest surviving botanic garden, hosted the event. Volunteers from the nearby community joined NEEF staff and board members to harvest vegetables, mulch beds, and help maintain the plant rows at Sankofa Community Farm.



Photo by Jerry Gormley



Photo by Jerry Gormley

This community farm produces more than 15,000 pounds of food each year for local farm stands and markets. It is powered by paid high school interns working alongside community elders, neighbors, and volunteers, including during National Public Lands Day. It was a perfect place to showcase this year's theme, *Our Home Outdoors*. After the event, volunteers enjoyed beverages provided by NPLD sponsor Athletic Brewing!

New Event Planning Resources

[Risk Ready for Outdoor Events](#) was developed this year as a guide to help site managers plan and lead safe, successful events on public lands—from choosing the right project to preparing for weather and site-specific risks. The guide provides tools and resources to consider before, during, and after an event so site managers can focus on what matters: connecting people to public lands through meaningful service.

[Key Considerations for Tracking Volunteer Impact](#) is another new resource for site managers to help them decide when, how, and why to collect data. Collecting this information helps site managers create more effective events that meet goals while providing volunteers with a rewarding experience.



Photo by US Army Corps of Engineers

NPLD Graphic

This year's NPLD graphic was created by artist and author Lindsay "Bones" Cordero, a US Air Force veteran with a passion for scuba diving and marine conservation. Her whimsical design captures Our Home Outdoors as a front-porch view of America's landscapes and wildlife—stretching west to east and sky to sea.

The sun and stars remind us of the changing rhythms of day and night, while each species tells a conservation story, from the recovery of the bald eagle and Atlantic puffin to the ongoing fight to protect the Kemp's ridley turtle and dusky gopher frog.

Explore the design in our [interactive story map](#) to discover the full picture.

