



EARTH DAY ACTIVITY PACK

BEFORE YOU START:

1. Print this activity pack.
2. Introduce your child to the Earth Day POWER WORDS in the next page.
3. Listen to podcast episode "Bees: The Great Pollinators" on "Orbit: Science for Kids on the Move"
4. Work on the activities in this activity pack to solidify the new words and concepts they just learned.



NEEF



pato & pato

1. LISTEN & FIND: EARTH DAY POWER WORDS

Explain to your child that they are about to learn about pollinators. Introduce these words by reading them out loud, and talking about them briefly. Let them ask questions if they have any.

Pollination

Pollen

Nectar

Fruit

Seed

Anther

Stigma

Ovary

Colony

Larva

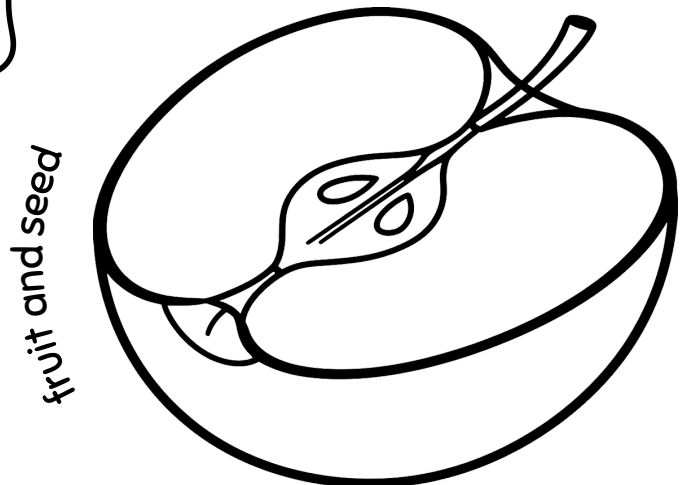
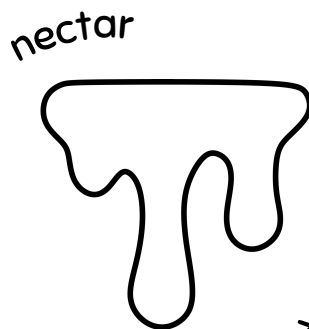
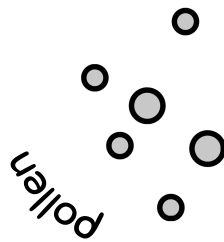
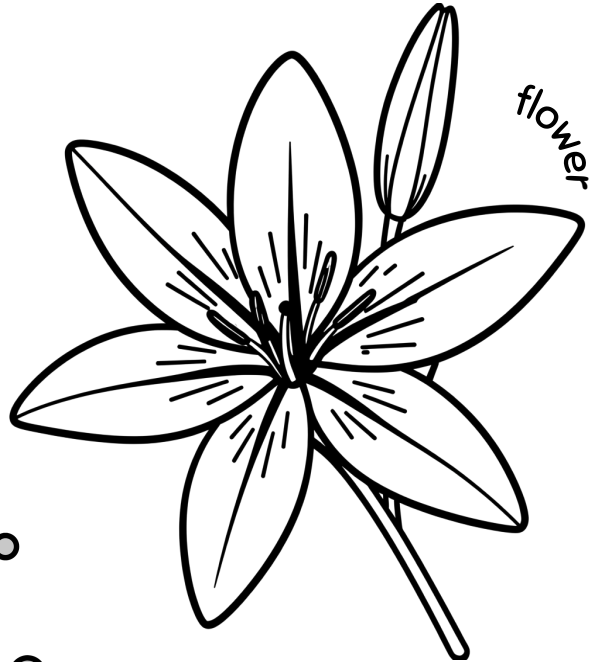
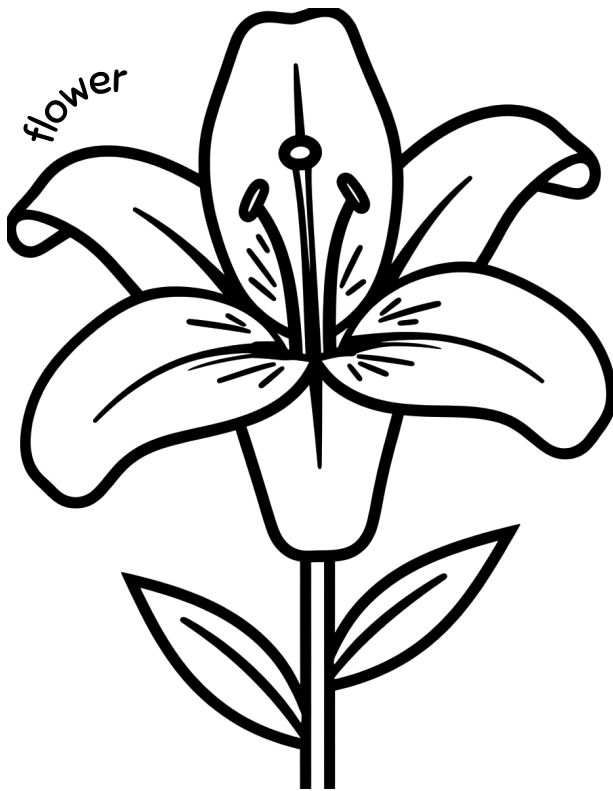
Habitat

Ecosystem

Entomologist

2. HOW DOES POLLINATION WORK?

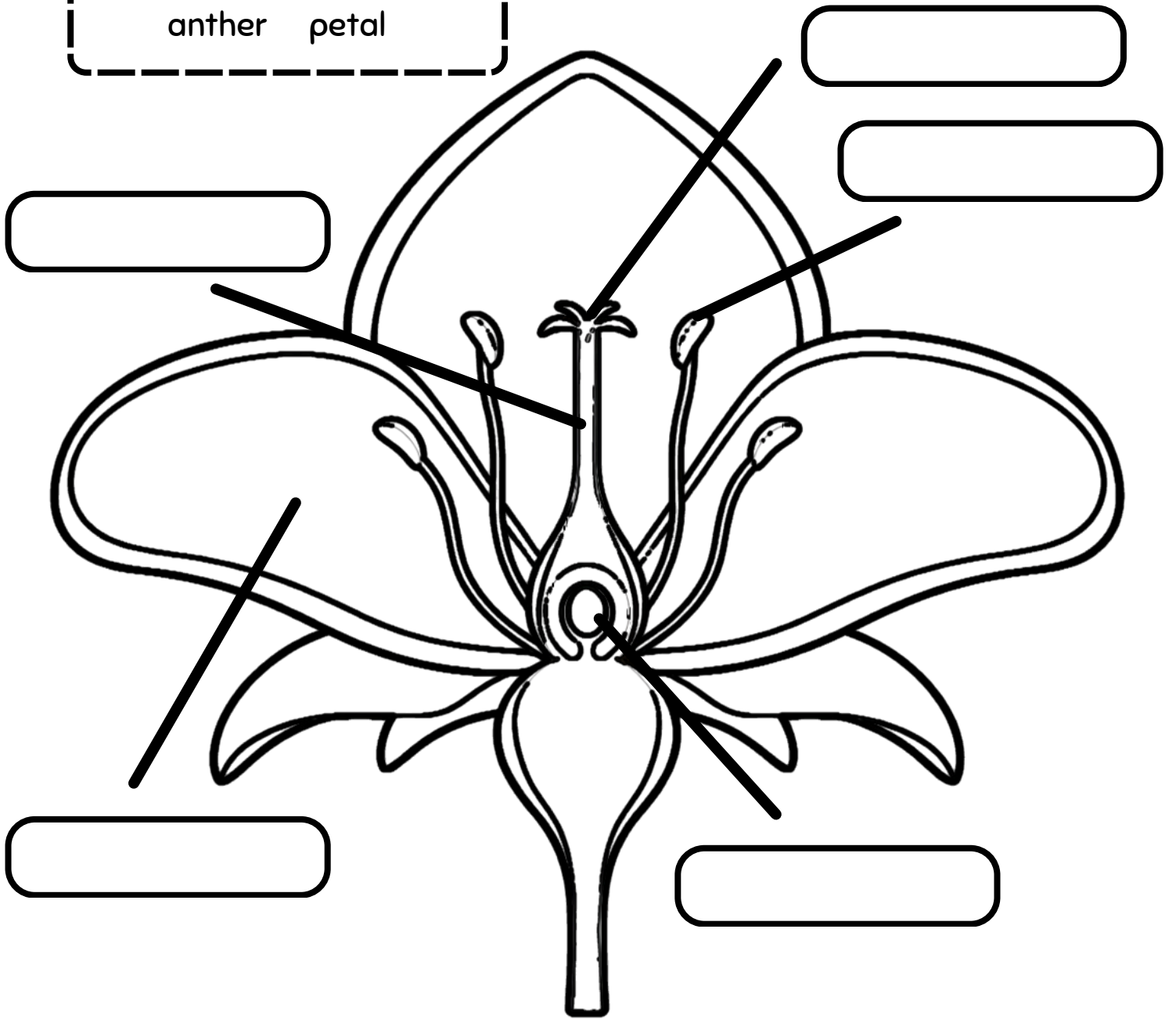
Color and cut the shapes below. Then put them in order to reenact the process of pollination.



3. PARTS OF THE FLOWER

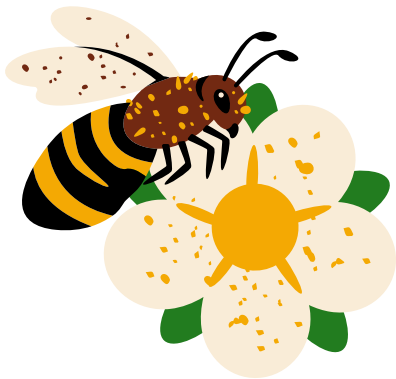
Color and use the word bank to label the parts of the flower below. Talk about the role of each part based on what your child heard on the podcast.

WORD BANK
stigma style ovary
anther petal



4. LET'S TALK LIKE SCIENTISTS

Cut out the cards below. Show your child the picture and ask the question.



**WHAT DOES A
POLLINATOR DO?**



**WHY ARE BEES SO
IMPORTANT?**



**HOW DOES AN
ECOSYSTEM WORK?**



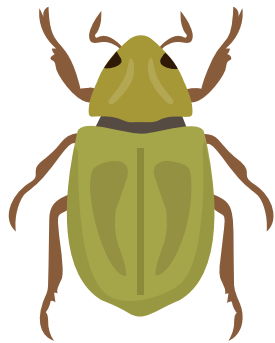
**WHAT'S A
COLONY?**



**SAY THE NAME OF SOME
POLLINATORS YOU KNOW.**



**WHERE DO
BEES LIVE?**



**WHAT DOES AN
ENTOMOLOGIST DO?**



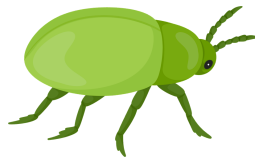
**WHAT IS
POLLEN FOR?**

5. LET'S GO OUTSIDE AND BE ENTOMOLOGISTS

Print this page and head outside to your backyard or a nearby park. Look for each item on the list and mark it off when you find it.



An open flower



An insect walking



An insect on a flower



A place where an insect could live



A butterfly



Pollen in a flower



A plant with lots of flowers



A bee or flying insect



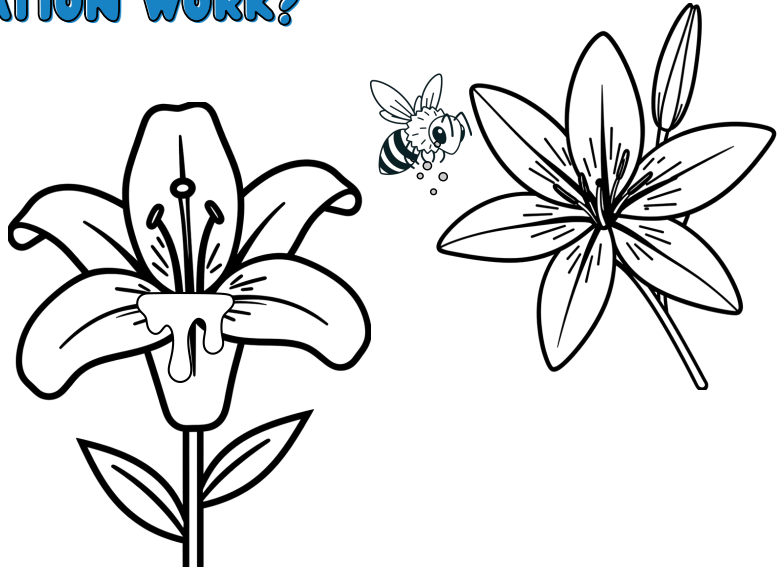
A pollinator (which one did you see?)

PARENT ANSWER KEY

2. HOW DOES POLLINATION WORK?

Look at this flower.
Flowers make something called pollen, which is like a fine powder.

Now the bee (or butterfly) comes to the flower because it wants to drink nectar, which is sweet.

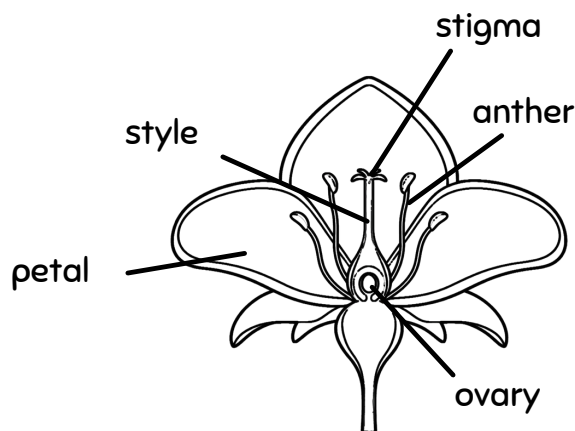


When the bee lands on the flower, pollen sticks to its body. Then, the bee flies to another flower and carries that pollen with it. When it reaches the new flower, it leaves a little bit of pollen there.

That's called pollination. Because of this, the flower can grow fruit, and inside the fruit are seeds.

Can you be the bee and carry the pollen to another flower?

3. PARTS OF THE FLOWER



4. LET'S TALK LIKE SCIENTISTS

What does a pollinator do? A pollinator moves pollen from one flower to another, helping plants grow and produce fruits and seeds.

Why are bees important? Bees are important because they help pollinate many plants that we rely on for food, like fruits and vegetables.

How does an ecosystem work? An ecosystem is a system where plants, animals, insects, and the environment work together and depend on each other to survive.

What is a colony? A colony is a group of bees that live and work together in a hive.

Name some pollinators. Bees, butterflies, hummingbirds, bats, and some insects.

Where do bees live? Bees live in hives or in protected places like trees, hollow spaces, or underground (depending on the type of bee).

What does an entomologist do? An entomologist studies insects, such as bees, butterflies, and others.

What is pollen used for? Pollen helps plants reproduce and create new seeds and fruits.